

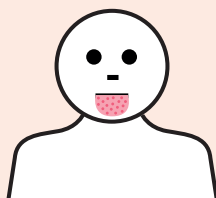
This document has been developed by [ASCIA](http://www.allergy.org.au), the peak professional body of clinical immunology/allergy specialists in Australia and New Zealand. ASCIA information is based on published literature and expert review, is not influenced by commercial organisations and is not intended to replace medical advice.

For patient or carer support contact [Allergy & Anaphylaxis Australia](http://www.allergy.org.au) or [Allergy New Zealand](http://www.allergy.org.au).

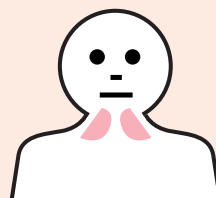
SIGNS OF ANAPHYLAXIS (SEVERE ALLERGIC REACTIONS)



Difficult or noisy breathing



Swelling of tongue



Swelling or tightness in throat



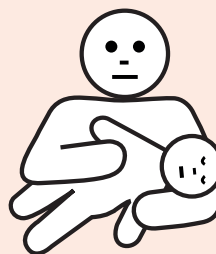
Wheeze or persistent cough



Difficulty talking or hoarse voice



Persistent dizziness or collapse



Pale and floppy (young children)



Abdominal pain, vomiting (these are signs of anaphylaxis for insect allergy)

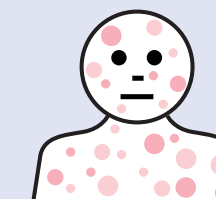
It is important to watch for ANY ONE of the signs of anaphylaxis shown above. Follow the instructions on the ASCIA Action Plan for Anaphylaxis, or the ASCIA Action Plan for Allergic Reactions, or the ASCIA First Aid Plan for Anaphylaxis. GIVE ADRENALINE (EPINEPHRINE) INJECTOR and call an ambulance.

A mild to moderate allergic reaction (see below) may occur before anaphylaxis.

SIGNS OF MILD TO MODERATE ALLERGIC REACTIONS



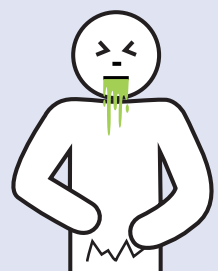
Swelling of lips, face, eyes



Hives or welts



Tingling mouth



Abdominal pain, vomiting (these are signs of anaphylaxis for insect allergy)

For more information go to www.allergy.org.au/patients/about-allergy